

# Migrating to Canvas has never been easier!

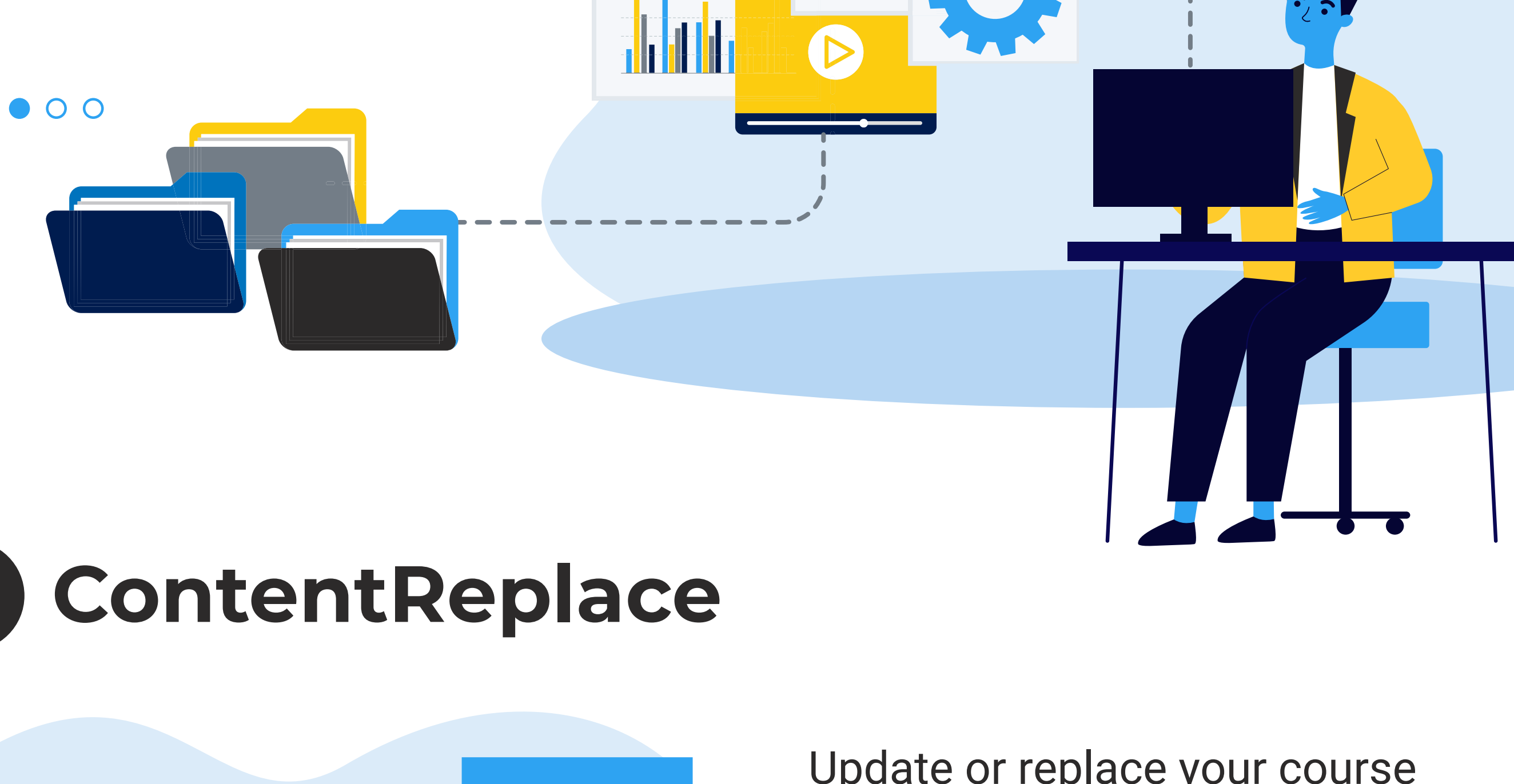
Check out these Do's and Don'ts on migrating to Canvas, and hear from those who've already made the move with K16 Solutions

At K16 Solutions, we help institutions migrate to Canvas more quickly and accurately, archive student data more affordably, and replace and update course content more rapidly.

## PRODUCTS AND SERVICES BY K16 SOLUTIONS

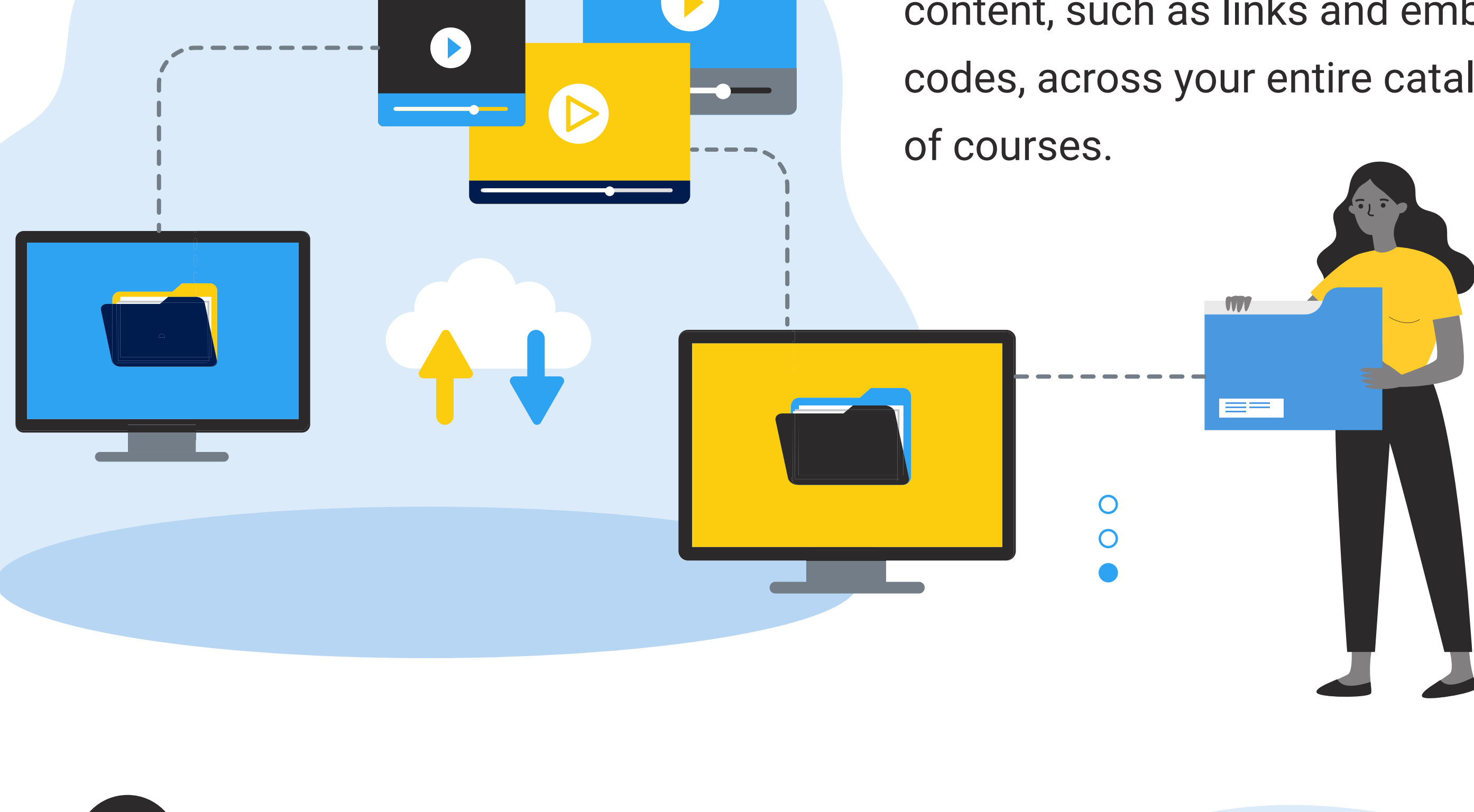
### 1 SystemMigration

Migrate your course content in real time, capturing all details such as quizzes, tests, question pools, and more.



### 2 ContentReplace

Update or replace your course content, such as links and embed codes, across your entire catalog of courses.



### 3 DataArchiving

Archive student data & course content more affordably than ever while retaining immediate access in the process.



## FIRST - THE DO'S AND DON'TS OF LMS MIGRATION:

**DON'T** outsource to a white glove team that migrates the courses manually one by one

**DO** use an automated solution that's proven to deliver ready-to-teach courses

**DON'T** expect faculty to rebuild courses manually—they have more important things to do

**DO** choose a partner that's helped dozens of institutions migrate to their new LMS

**DON'T** use ineffective bulk migration tools that require extensive clean up on migration

**DO** use sophisticated, state-of-the-art technology that reduces project timelines to just 60-90 days

## A FEW CANVAS CUSTOMERS THAT CHOSE INNOVATIVE APPROACHES TO LMS MIGRATION AND DATA ARCHIVING.

### CSU-Fullerton



- 15,000 Courses Migrated with SystemMigration
- Migrated from Moodle

#### On SystemMigration:

"CSU Fullerton partnered with K16 Solutions for the development of Moodle integrations with their proprietary platform. Once the integration project was completed, we were able to begin moving courses in bulk from Moodle to Canvas and have already moved well over 10,000 courses. Using an automated solution like SystemMigration has saved our faculty and staff countless hours that would have been spent transferring and repairing course content"

*Dr. Amir Dabirian, CIO, California State University-Fullerton*

### Saint Mary's University of Minnesota



- 2,200 Courses Migrated with SystemMigration
- 21,000 Courses Archived on DataArchiving
- Migrated from Blackboard

#### On DataArchiving:

"The content can easily move from DataArchiving back to Canvas. We don't have to download a cartridge and clean it up later on. Instead, we simply find the course, click a button, and it goes from DataArchiving right over to Canvas. Our archive is now its own version of an LMS where we can easily move content to and from Canvas and DataArchiving."

*Abram (Abe) Hedtke, Director of Instructional Technology, Saint Mary's University of Minnesota*

### Mohawk College



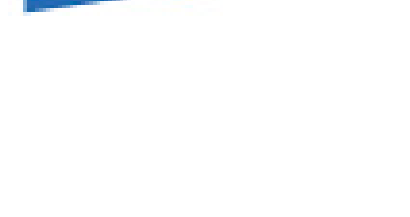
- 20,000 Courses Migrated with SystemMigration
- Migrated from Brightspace
- Project Timeline: 10 Days

#### On SystemMigration:

"K16's automated SystemMigration service saved a huge amount of work for faculty, eliminating the need for them to reconfigure and reformat their courses, content, quizzes, and other course materials. The consistency of the data and files that were migrated helped the CTL team to inform, train, and orientate faculty and staff on the new platform."

*Cebert Adamson Dean of Continuing Education & Academic Quality, Mohawk College*

### Heriot-Watt University



- 10,400 Courses Migrated with SystemMigration
- Migrated from Blackboard

#### On SystemMigration:

"K16 exceeded in terms of service management. They've been super-responsive almost any time of day. They've been a lifesaver. What could have been a complex activity turned out to be a straightforward and smooth process."

"K16's recommendations saved us weeks of analysis; they've consistently taken the worry away. Nobody worries about courses anymore. You can trust K16—it just happens."

*Dave Baskill, Project Manager, Heriot-Watt University*

### Loyola University of New Orleans



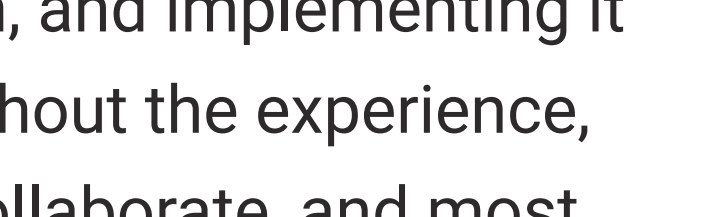
- 100 Courses Migrated with SystemMigration
- 19,500 Courses Archived with DataArchiving
- Migrated from Blackboard

#### On DataArchiving:

"We had a tremendous experience working with the K16 Solutions team in helping us migrate from Blackboard to Canvas, so when we heard about the savings and benefits of archiving student data on their platform we jumped at the chance. We can now use those cost savings for other critical areas within our operations or academic departments."

*- Dr. Carol Ann MacGregor, Vice Provost, Loyola University New Orleans*

### Rutgers University



- 30,000 Courses Migrated with SystemMigration
- Migrated from Sakai

#### On SystemMigration:

"When K16 Solutions joined us at the table to discuss the unique challenges around our LMS transition to Canvas, they did not come with a quick-fix to sell us, but rather offer to partner with Rutgers in identifying the issues, developing a solution, and implementing it in a way that would meet the needs of all our stakeholders. Throughout the experience, the K16 team showcased their technical prowess, willingness to collaborate, and most importantly, empathy for our faculty and students."

*Charles A. Collick Jr, Associate Director, IT Accessibility & Instructional Technology, Rutgers University*

### Wake Forest University



- 18,000 Courses Migrated with SystemMigration
- Migrated from Sakai

#### On SystemMigration:

"When they showed us a live demo of the content being migrated from Sakai to Canvas using one of our real courses I'm pretty sure my jaw actually hit the table. Even little things like finding and replacing references to Sakai and changing that to Canvas were a huge deal for faculty and something K16 easily solved for us."

*Laura Brewer, LMS Manager, Wake Forest University*

"A list of robust courses was provided to K16, and not only were they migrated quickly, the content was placed in Canvas in a way that made the courses ready for immediate faculty use."

*Chris McLaughlin, Assistant Director, Wake Forest University*

If you're thinking of moving to Canvas and need help migrating course content quickly, accurately, and without the burden or cost of a manual process, visit [k16solutions.com](https://k16solutions.com) to learn more about what a best-in-class and automated migration solution might look like for your institution.

